



jordan fishwick

FALLOWFIELD
Bethnall Drive



Bethnall Drive, Fallowfield, M14 7ED

£225,000



The Property

An appealing three bedroom terrace, located on a quiet development in Fallowfield, just off Wilbraham Road, with brilliant transport links into Manchester City Centre, the Hospitals and Universities. The property is warmed by gas central heating, which is further complemented by uPVC double glazed windows. 839 sq ft. The property comprises: - A large, bright, entrance hallway with large storage cupboard, fitted kitchen, a generous living room extending over 17sq ft with French doors out to rear, To the first floor are three bedrooms, two of which are doubles and a bathroom with fitted white suite. To the rear is a south westerly facing garden with a summer house .

Directions

M14 7ED



- Three bedrooms
- uPVC double glazing
- Fitted kitchen & bathroom
- Nearby transport links to City Centre
- Generous living room
- South Westerly facing garden
- Sun room to rear garden with electric

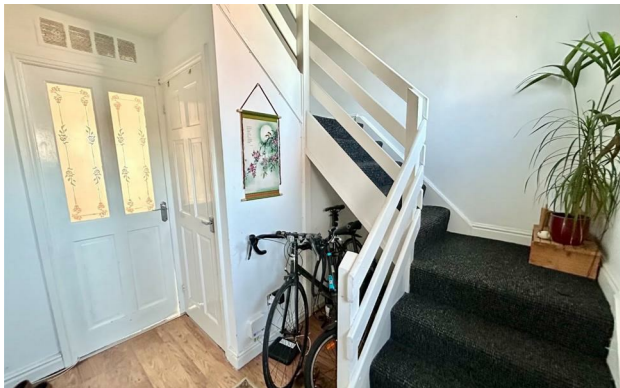
Postcode - M14 7ED

EPC Rating - C

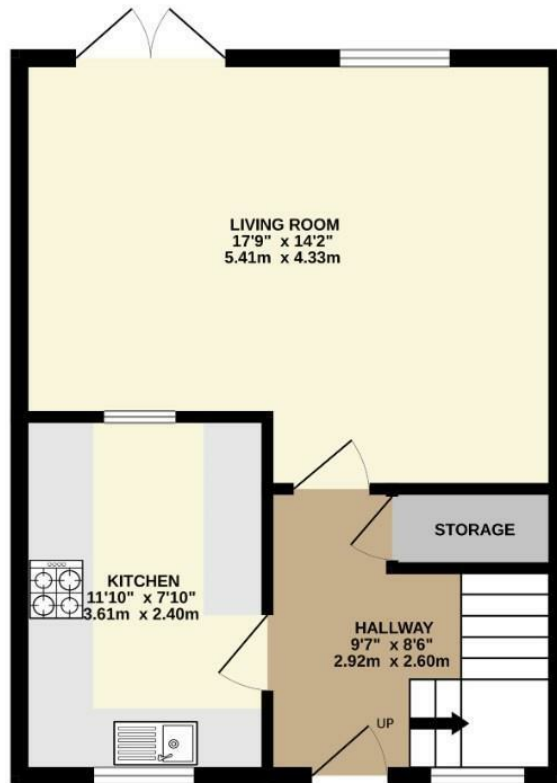
Floor Area - 839.00 sq ft

Local Authority - Manchester City Council

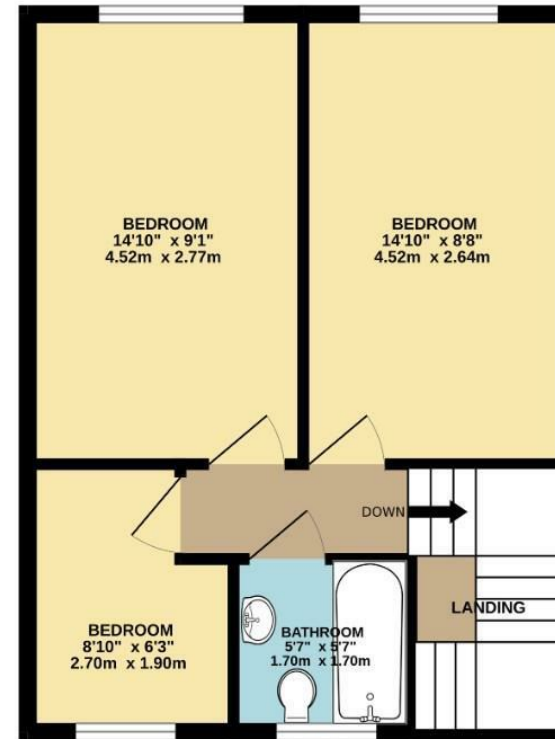
Council Tax - A



GROUND FLOOR
420 sq.ft. (39.0 sq.m.) approx.



1ST FLOOR
420 sq.ft. (39.0 sq.m.) approx.



TOTAL FLOOR AREA : 839 sq.ft. (78.0 sq.m.) approx.
Measurements are approximate. Not to scale. Illustrative purposes only
Made with Metropix ©2025



These particulars are believed to be accurate but they are not guaranteed and do not form a contract. Neither Jordan Fishwick nor the vendor or lessor accept any responsibility in respect of these particulars, which are not intended to be statements or representations of fact and any intending purchaser or lessee must satisfy himself by inspection or otherwise as to the correctness of each of the statements contained in these particulars. Any floorplans on this brochure are for illustrative purposes only and are not necessarily to scale.

Offices also at: Wilmslow, Macclesfield, Hale, Sale, Chorlton, Glossop, Manchester & Salford

757-759 Wilmslow Road, Didsbury Village, Manchester

0161 445 4480

didsbury@jordanfishwick.co.uk
www.jordanfishwick.co.uk